

Sample Name: **GSC**  
Tested for: **Ananda Farms**  
**Compliance - Usable**

Laboratory ID: 19A0116-02

Matrix: Useable Marijuana

Sample Metrc ID: 1A4010300000836000002090

Strain: GSC

Lot # NA

Date Sampled: 01/28/19 00:00

Batch RFID: 1A4010300000836000002087

Date Accepted: 01/29/19

Batch Size: 6810 (g)



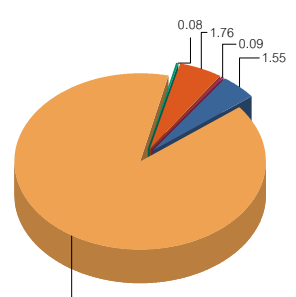
## Potency Analysis

Date Extracted: 01/31/19

Analysis Method/SOP: Potency

Date Analyzed: 01/31/19

\* - ORELAP certified analyte

Cannabinoids	% weight	mg/g	LOQ (%)	Cannabinoids Profile												
<b>Total THC</b> ((THCA*0.877)+d9)	26.80	268	0.03	 <table border="1"> <tr><td>THC</td><td>1.55</td></tr> <tr><td>THCA</td><td>28.79</td></tr> <tr><td>CBG</td><td>0.08</td></tr> <tr><td>CBGA</td><td>1.76</td></tr> <tr><td>CBC</td><td>0.09</td></tr> <tr><td>Total</td><td>32.26</td></tr> </table>	THC	1.55	THCA	28.79	CBG	0.08	CBGA	1.76	CBC	0.09	Total	32.26
THC	1.55															
THCA	28.79															
CBG	0.08															
CBGA	1.76															
CBC	0.09															
Total	32.26															
<b>Total CBD</b> ((CBDA*0.877)+CBD)	< LOQ	< LOQ	0.03													
d9-THC (d9-Tetrahydrocannabinol)*	1.55	15.5	0.04													
d8-THC (d8-Tetrahydrocannabinol)*	< LOQ	< LOQ	0.04													
THCA (d9-Tetrahydrocannabinolic Acid)*	28.79	287.9	0.06													
CBD (Cannabidiol)*	< LOQ	< LOQ	0.03													
CBDA (Cannabidiolic Acid)*	< LOQ	< LOQ	0.06													
CBN (Cannabinol)*	< LOQ	< LOQ	0.03													
CBG (Cannabigerol)*	0.08	0.8	0.04													
CBGA (Cannabigerolic Acid)	1.76	17.6	0.04													
CBDV (Cannabidivarin)*	< LOQ	< LOQ	0.04													
CBDVA (Cannabidivarinic Acid)	< LOQ	< LOQ	0.04													
CBC (Cannabichromene)*	0.09	0.9	0.04													
THCV (Tetrahydrocannabivarin)	< LOQ	< LOQ	0.04													
<b>Total Cannabinoids</b>	32.26	322.6	0.03													

## Water Activity and Moisture

Analyte	Result	Limit	Units	LOQ	Analyzed	Method
Water Activity	0.427	0.65	AW	0.0300	02/01/2019	Water Activity
Percent Moisture	12.8	15	%	0.10	02/01/2019	Moisture

Cannabinoids reported as dry weight (moisture corrected)

Results above the action level are highlighted in red #.

<LOQ - Results below the Limit of Quantitation - Compound not detected



Brian Weigel  
Lab Director

These results relate only to the sample included on this report. The report may not be reproduced except in full, without the written permission of SC Laboratories. Samples tested in accordance with Oregon Administrative Rules, TNI 2009 Standard and SC Laboratories quality assurance plan unless otherwise noted.

Sample Name: <b>GSC</b>	Date Sampled: <b>01/28/19 00:00</b>
Tested for: <b>Ananda Farms</b>	Date Accepted: <b>01/29/19</b>
<b>Compliance - Usable</b>	
Laboratory ID: <b>19A0116-02</b> Strain: <b>GSC</b>	Sample Metrc ID: <b>1A4010300000836000002090</b>
Matrix: <b>Useable Marijuana</b>	Batch RFID: <b>1A4010300000836000002087</b>
Lot # <b>NA</b>	Batch Size: <b>6810 (g)</b>

### Terpene Analysis

Date Extracted: 01/31/19

Analysis Method/SOP: Potency

Date Analyzed: 02/01/19

Analyte	Result (%)	LOQ	Analyte	Result	LOQ
alpha Pinene	0.029	0.018	Myrcene	1.296	0.018
alpha Phellandrene	< LOQ	0.018	3-Carene	< LOQ	0.018
alpha Terpinene	< LOQ	0.018	Limonene	0.292	0.018
Terpinolene	0.045	0.018	Linalool	0.154	0.018
Fenchol	0.034	0.018	Borneol	< LOQ	0.018
Terpineol	0.032	0.018	Geraniol	0.022	0.018
alpha Humulene	0.216	0.018	beta Caryophyllene	0.539	0.018
Caryophyllene Oxide	0.020	0.018	alpha Bisabolol	0.060	0.018
Camphene	< LOQ	0.018	beta Pinene	0.059	0.018
Ocimene	< LOQ	0.018	Sabinene	< LOQ	0.018
Camphor	< LOQ	0.018	Isoborneol	< LOQ	0.018
Menthol	< LOQ	0.018	alpha Cedrene	< LOQ	0.018
Nerolidol	0.040	0.018	R-(+)-Pulegone	< LOQ	0.018
Eucalyptol	< LOQ	0.018	p-Cymene	< LOQ	0.018
(-)-Isopulegol	< LOQ	0.018	Geranyl Acetate	< LOQ	0.018
Guaiol	< LOQ	0.018	Valencene	0.090	0.018
Phytol	0.040	0.018	Citronellol	< LOQ	0.018
gamma-Terpinene	< LOQ	0.018			
<b>Total Terpenes</b>				<b>2.968 %</b>	

<LOQ - Results below the Limit of Quantitation - Compound not detected

Terpene Analysis is not ORELAP Accredited.

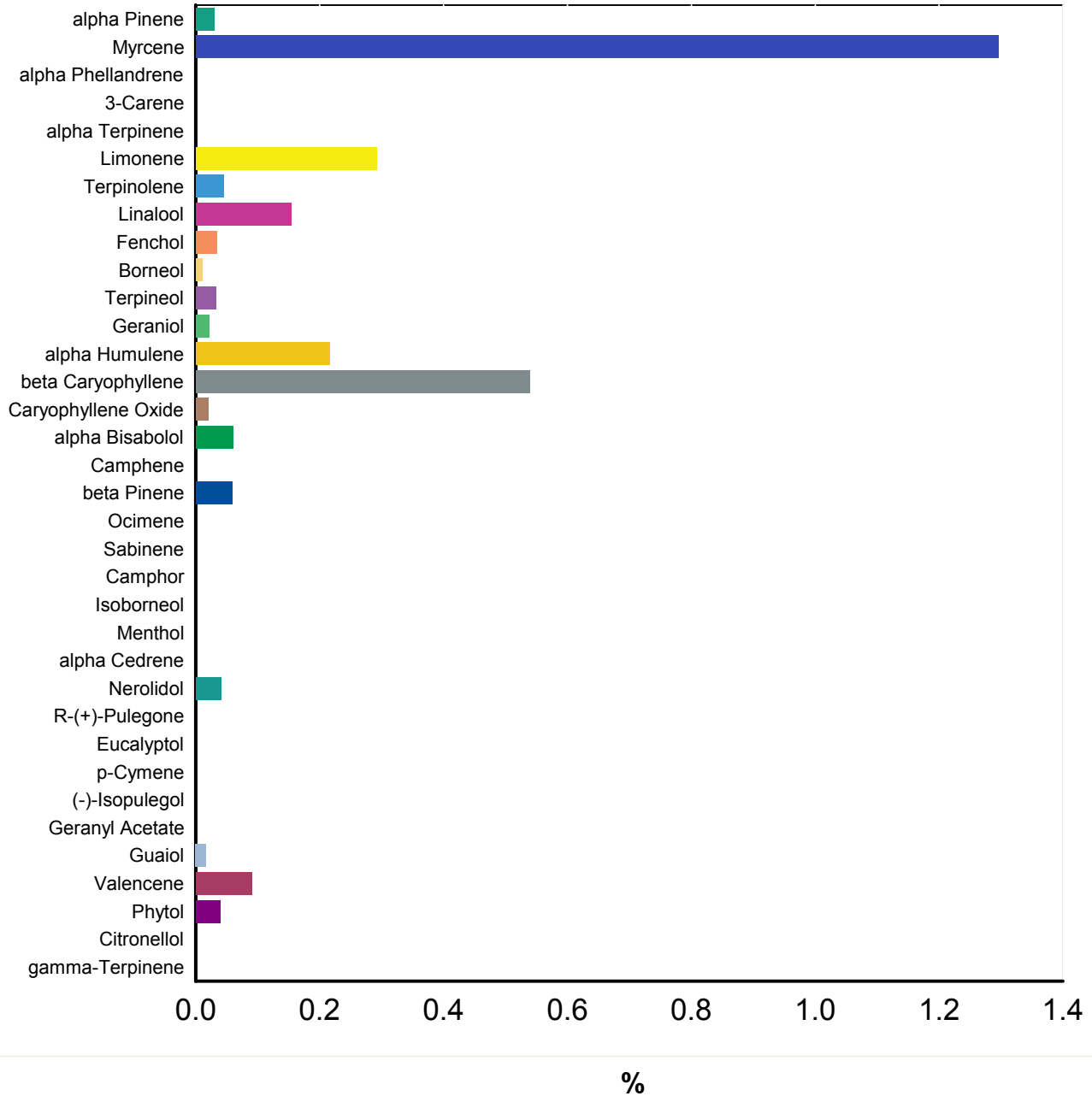


Brian Weigel  
Lab Director

These results relate only to the sample included on this report. The report may not be reproduced except in full, without the written permission of SC Laboratories. Samples tested in accordance with Oregon Administrative Rules, TNI 2009 Standard and SC Laboratories quality assurance plan unless otherwise noted.

Sample Name: **GSC** Date Sampled: **01/28/19 00:00**  
 Tested for: **Ananda Farms** Date Accepted: **01/29/19 19:29**  
**Compliance - Usable**  
 Laboratory ID: **19A0116-02** Matrix: **Useable Marijuana** Client/Metric ID: **1A4010300000836000002090**

**Terpene Profile**




Brian Weigel  
Lab Director

These results relate only to the sample included on this report. The report may not be reproduced except in full, without the written permission of SC Laboratories. Samples tested in accordance with Oregon Administrative Rules, TNI 2009 Standard and SC Laboratories quality assurance plan unless otherwise noted.

Sample Name: **GSC** Date Sampled: **01/28/19 00:00**  
 Tested for: **Ananda Farms** Date Accepted: **01/29/19**  
**Compliance - Usable**

Laboratory ID: **19A0116-02** Strain: **GSC** Sample Metrc ID: **1A4010300000836000002090**  
 Matrix: **Useable Marijuana** Batch RFID: **1A4010300000836000002087**  
 Lot # **NA** Batch Size: **6810 (g)**

## Pesticide Analysis in ppm

Date Extracted: 01/31/19 Analysis Method/SOP: Pesticides  
 Date Analyzed: 02/01/19 Results above the action levels are highlighted in red #.

Analyte	Result	Action Level	LOQ	Analyte	Result	Action Level	LOQ
Abamectin	< LOQ	0.5	0.24	Acephate	< LOQ	0.4	0.19
Acequinocyl	< LOQ	2	0.96	Acetamiprid	< LOQ	0.2	0.10
Aldicarb	< LOQ	0.4	0.19	Azoxystrobin	< LOQ	0.2	0.10
Bifenazate	< LOQ	0.2	0.10	Bifenthrin	< LOQ	0.2	0.10
Boscalid	< LOQ	0.4	0.19	Carbaryl	< LOQ	0.2	0.10
Carbofuran	< LOQ	0.2	0.10	Chlorantraniliprole	< LOQ	0.2	0.10
Chlorfenapyr	< LOQ	1	0.48	Chlorpyrifos	< LOQ	0.2	0.10
Clofentezine	< LOQ	0.2	0.10	Cyfluthrin	< LOQ	1	0.48
Cypermethrin	< LOQ	1	0.48	Daminozide	< LOQ	1	0.48
DDVP (Dichlorvos)	< LOQ	1	0.48	Diazinon	< LOQ	0.2	0.10
Dimethoate	< LOQ	0.2	0.10	Ethoprophos	< LOQ	0.2	0.10
Etofenprox	< LOQ	0.4	0.19	Etoxazole	< LOQ	0.2	0.10
Fenoxycarb	< LOQ	0.2	0.10	Fenpyroximate	< LOQ	0.4	0.19
Fipronil	< LOQ	0.4	0.19	Fonicamid	< LOQ	1	0.48
Fludioxonil	< LOQ	0.4	0.19	Hexythiazox	< LOQ	1	0.48
Imazalil	< LOQ	0.2	0.10	Imidacloprid	< LOQ	0.4	0.19
Kresoxim-methyl	< LOQ	0.4	0.19	Malathion	< LOQ	0.2	0.10
Metalaxyl	< LOQ	0.2	0.10	Methiocarb	< LOQ	0.2	0.10
Methomyl	< LOQ	0.4	0.19	Methyl parathion	< LOQ	0.2	0.10
MGK-264	< LOQ	0.2	0.10	Myclobutanil	< LOQ	0.2	0.10
Naled	< LOQ	0.5	0.24	Oxamyl	< LOQ	1	0.48
Paclobutrazol	< LOQ	0.4	0.19	Permethrins (total)	< LOQ	0.2	0.10
Phosmet	< LOQ	0.2	0.10	Piperonyl butoxide	< LOQ	2	0.48
Prallethrin	< LOQ	0.2	0.10	Propiconazole	< LOQ	0.4	0.19
Propoxur	< LOQ	0.2	0.10	Pyrethrins (total)	< LOQ	1	0.48
Pyridaben	< LOQ	0.2	0.10	Spinosad	< LOQ	0.2	0.10
Spiromesifen	< LOQ	0.2	0.10	Spirotetramat	< LOQ	0.2	0.10
Spiroxamine	< LOQ	0.4	0.19	Tebuconazole	< LOQ	0.4	0.19
Thiacloprid	< LOQ	0.2	0.10	Thiamethoxam	< LOQ	0.2	0.10
Trifloxystrobin	< LOQ	0.2	0.10				

<LOQ - Results below the Limit of Quantitation - Compound not detected



Brian Weigel  
Lab Director

These results relate only to the sample included on this report. The report may not be reproduced except in full, without the written permission of SC Laboratories. Samples tested in accordance with Oregon Administrative Rules, TNI 2009 Standard and SC Laboratories quality assurance plan unless otherwise noted.

**Case Narrative**

**Terpenes** - Phytol result was above QC criteria in the Method Blank.

Phytol 1 exceeded normally accepted RPD criteria in the Sample Duplicate due to relatively large variations in very small values

**Quality Control  
Potency**

**Batch: B190157 - Potency/Terpenes**

Blank(B190157-BLK1)			Extracted - 01/31/19 9:20 Analyzed - 02/01/19 11:48					
Analyte	Result	Units	Spike Level	Source Result	%REC	%REC Limits	RPD	RPD Limit
d9-THC (d9-Tetrahydrocannabinol)	< LOQ	%						
d8-THC (d8-Tetrahydrocannabinol)	< LOQ	%						
THCA (d9-Tetrahydrocannabinolic Acid)	< LOQ	%						
CBD (Cannabidiol)	< LOQ	%						
CBDA (Cannabidiolic Acid)	< LOQ	%						
CBN (Cannabinol)	< LOQ	%						
CBG (Cannabigerol)	< LOQ	%						
CBGA (Cannabigerolic Acid)	< LOQ	%						
CBDV (Cannabidivarin)	< LOQ	%						
CBDVA (Cannabidivarinic Acid)	< LOQ	%						
CBC (Cannabichromene)	< LOQ	%						
THCV (Tetrahydrocannabivarin)	< LOQ	%						

Duplicate(B190157-DUP1)			Extracted - 01/31/19 9:20 Analyzed - 01/31/19 20:21					
Analyte	Result	Units	Spike Level	Source Result	%REC	%REC Limits	RPD	RPD Limit
d9-THC (d9-Tetrahydrocannabinol)	1.15	%		1.27			9.67	20
d8-THC (d8-Tetrahydrocannabinol)	< LOQ	%		< LOQ				20
CBD (Cannabidiol)	< LOQ	%		< LOQ				20
CBDA (Cannabidiolic Acid)	0.05	%		0.05			2.56	20
CBN (Cannabinol)	< LOQ	%		< LOQ				20
CBG (Cannabigerol)	0.12	%		0.13			4.21	20
CBGA (Cannabigerolic Acid)	1.51	%		1.64			8.03	20
CBDV (Cannabidivarin)	< LOQ	%		< LOQ				20
CBDVA (Cannabidivarinic Acid)	< LOQ	%		< LOQ				20
CBC (Cannabichromene)	< LOQ	%		< LOQ				20
THCV (Tetrahydrocannabivarin)	< LOQ	%		< LOQ				20

LCS(B190157-BS1)			Extracted - 01/31/19 9:20 Analyzed - 01/31/19 20:13					
Analyte	Result	Units	Spike Level	Source Result	%REC	%REC Limits	RPD	RPD Limit



Brian Weigel  
Lab Director

These results relate only to the sample included on this report. The report may not be reproduced except in full, without the written permission of SC Laboratories. Samples tested in accordance with Oregon Administrative Rules, TNI 2009 Standard and SC Laboratories quality assurance plan unless otherwise noted.

**Quality Control  
 Potency (Continued)**

**Batch: B190157 - Potency/Terpenes (Continued)**

LCS(B190157-BS1)		Extracted - 01/31/19 9:20 Analyzed - 01/31/19 20:13						
Analyte	Result	Units	Spike Level	Source Result	%REC	%REC Limits	RPD	RPD Limit
d9-THC (d9-Tetrahydrocannabinol)	0.04	%	0.0400		98.5	80-120		
CBD (Cannabidiol)	0.04	%	0.0400		100	80-120		
CBDA (Cannabidiolic Acid)	0.04	%	0.0400		91.8	80-120		
CBN (Cannabinol)	0.04	%	0.0400		94.6	80-120		



Brian Weigel  
 Lab Director

These results relate only to the sample included on this report. The report may not be reproduced except in full, without the written permission of SC Laboratories. Samples tested in accordance with Oregon Administrative Rules, TNI 2009 Standard and SC Laboratories quality assurance plan unless otherwise noted.

## Quality Control Pesticide Analysis

**Batch: B190159 - Pesticide Prep**

Blank(B190159-BLK1)		Extracted - 01/31/19 9:27 Analyzed - 02/01/19 2:58						
Analyte	Result	Units	Spike Level	Source Result	%REC	%REC Limits	RPD	RPD Limit
Abamectin	< LOQ	ppm						
Acephate	< LOQ	ppm						
Acequinocyl	< LOQ	ppm						
Acetamiprid	< LOQ	ppm						
Aldicarb	< LOQ	ppm						
Azoxystrobin	< LOQ	ppm						
Bifenazate	< LOQ	ppm						
Bifenthrin	< LOQ	ppm						
Boscalid	< LOQ	ppm						
Carbaryl	< LOQ	ppm						
Carbofuran	< LOQ	ppm						
Chlorantraniliprole	< LOQ	ppm						
Chlorfenapyr	< LOQ	ppm						
Chlorpyrifos	< LOQ	ppm						
Clofentezine	< LOQ	ppm						
Cyfluthrin	< LOQ	ppm						
Cypermethrin	< LOQ	ppm						
Daminozide	< LOQ	ppm						
DDVP (Dichlorvos)	< LOQ	ppm						
Diazinon	< LOQ	ppm						
Dimethoate	< LOQ	ppm						
Ethoprophos	< LOQ	ppm						
Etofenprox	< LOQ	ppm						
Etoxazole	< LOQ	ppm						
Fenoxycarb	< LOQ	ppm						
Fenpyroximate	< LOQ	ppm						
Fipronil	< LOQ	ppm						
Fonicamid	< LOQ	ppm						
Fludioxonil	< LOQ	ppm						
Hexythiazox	< LOQ	ppm						
Imazalil	< LOQ	ppm						
Imidacloprid	< LOQ	ppm						
Kresoxim-methyl	< LOQ	ppm						
Malathion	< LOQ	ppm						
Metalaxyl	< LOQ	ppm						



Brian Weigel  
Lab Director

These results relate only to the sample included on this report. The report may not be reproduced except in full, without the written permission of SC Laboratories. Samples tested in accordance with Oregon Administrative Rules, TNI 2009 Standard and SC Laboratories quality assurance plan unless otherwise noted.

## Quality Control

### Pesticide Analysis (Continued)

**Batch: B190159 - Pesticide Prep (Continued)**

<b>Blank(B190159-BLK1)</b>			<b>Extracted - 01/31/19 9:27 Analyzed - 02/01/19 2:58</b>					
<b>Analyte</b>	<b>Result</b>	<b>Units</b>	<b>Spike Level</b>	<b>Source Result</b>	<b>%REC</b>	<b>%REC Limits</b>	<b>RPD</b>	<b>RPD Limit</b>
Methiocarb	< LOQ	ppm						
Methomyl	< LOQ	ppm						
Methyl parathion	< LOQ	ppm						
MGK-264	< LOQ	ppm						
Myclobutanil	< LOQ	ppm						
Naled	< LOQ	ppm						
Oxamyl	< LOQ	ppm						
Paclbutrazol	< LOQ	ppm						
Permethrins (total)	< LOQ	ppm						
Phosmet	< LOQ	ppm						
Piperonyl butoxide	< LOQ	ppm						
Prallethrin	< LOQ	ppm						
Propiconazole	< LOQ	ppm						
Propoxur	< LOQ	ppm						
Pyrethrins (total)	< LOQ	ppm						
Pyridaben	< LOQ	ppm						
Spinosad	< LOQ	ppm						
Spiromesifen	< LOQ	ppm						
Spirotetramat	< LOQ	ppm						
Spiroxamine	< LOQ	ppm						
Tebuconazole	< LOQ	ppm						
Thiacloprid	< LOQ	ppm						
Thiamethoxam	< LOQ	ppm						
Trifloxystrobin	< LOQ	ppm						

<b>LCS(B190159-BS1)</b>			<b>Extracted - 01/31/19 9:27 Analyzed - 02/01/19 3:14</b>					
<b>Analyte</b>	<b>Result</b>	<b>Units</b>	<b>Spike Level</b>	<b>Source Result</b>	<b>%REC</b>	<b>%REC Limits</b>	<b>RPD</b>	<b>RPD Limit</b>
Abamectin	1.52	ppm	0.980		155	29-150		
Acephate	1.00	ppm	1.00		99.6	48-133		
Acequinocyl	0.89	ppm	1.00		89.5	48-150		
Acetamiprid	0.96	ppm	1.00		96.1	45-150		
Aldicarb	1.01	ppm	1.00		101	58-134		
Azoxystrobin	0.94	ppm	1.00		93.8	25-150		
Bifenazate	1.01	ppm	1.00		101	46-141		
Bifenthrin	1.08	ppm	1.00		108	55-150		



Brian Weigel  
Lab Director

These results relate only to the sample included on this report. The report may not be reproduced except in full, without the written permission of SC Laboratories. Samples tested in accordance with Oregon Administrative Rules, TNI 2009 Standard and SC Laboratories quality assurance plan unless otherwise noted.



## Quality Control Pesticide Analysis (Continued)

Batch: B190159 - Pesticide Prep (Continued)

LCS(B190159-BS1)		Extracted - 01/31/19 9:27 Analyzed - 02/01/19 3:14						
Analyte	Result	Units	Spike Level	Source Result	%REC	%REC Limits	RPD	RPD Limit
Boscalid	0.95	ppm	1.00		95.2	34-141		
Carbaryl	0.98	ppm	1.00		97.6	67-125		
Carbofuran	0.97	ppm	1.00		96.9	71-128		
Chlorantraniliprole	1.03	ppm	1.00		103	43-138		
Chlorfenapyr	1.06	ppm	1.00		106	45-150		
Chlorpyrifos	1.03	ppm	1.00		103	36-150		
Clofentezine	1.00	ppm	1.00		100	59-135		
Cyfluthrin	1.03	ppm	1.00		103	33-150		
Cypermethrin	1.12	ppm	1.00		112	47-148		
Daminozide	0.55	ppm	1.00		55.2	18-116		
DDVP (Dichlorvos)	0.97	ppm	1.00		97.1	65-150		
Diazinon	0.96	ppm	1.00		96.3	60-130		
Dimethoate	0.98	ppm	1.00		98.3	65-131		
Ethoprophos	0.90	ppm	1.00		90.5	52-150		
Etofenprox	0.99	ppm	1.00		98.5	60-139		
Etoxazole	0.97	ppm	1.00		97.4	59-122		
Fenoxycarb	0.96	ppm	1.00		95.9	39-146		
Fenpyroximate	0.93	ppm	1.00		93.4	44-147		
Fipronil	0.95	ppm	1.00		94.6	40-143		
Flonicamid	1.12	ppm	1.00		112	50-142		
Fludioxonil	1.96	ppm	1.00		196	49-150		
Hexythiazox	1.01	ppm	1.00		101	41-142		
Imazalil	0.87	ppm	1.00		87.4	61-127		
Imidacloprid	0.91	ppm	1.00		91.4	36-150		
Kresoxim-methyl	0.94	ppm	1.00		93.8	53-131		
Malathion	0.98	ppm	1.00		98.1	55-134		
Metalaxyl	0.91	ppm	1.00		90.5	64-127		
Methiocarb	0.95	ppm	1.00		94.8	53-144		
Methomyl	1.18	ppm	1.00		118	47-141		
Methyl parathion	1.09	ppm	1.00		109	48-142		
MGK-264	0.57	ppm	0.630		90.0	38-150		
Myclobutanil	0.91	ppm	1.00		91.3	45-146		
Naled	0.82	ppm	1.00		82.2	28-113		
Oxamyl	1.14	ppm	1.00		114	48-133		
Paclobutrazol	0.97	ppm	1.00		97.2	37-150		



Brian Weigel  
 Lab Director

These results relate only to the sample included on this report. The report may not be reproduced except in full, without the written permission of SC Laboratories. Samples tested in accordance with Oregon Administrative Rules, TNI 2009 Standard and SC Laboratories quality assurance plan unless otherwise noted.

## Quality Control Pesticide Analysis (Continued)

**Batch: B190159 - Pesticide Prep (Continued)**

LCS(B190159-BS1)		Extracted - 01/31/19 9:27 Analyzed - 02/01/19 3:14						
Analyte	Result	Units	Spike Level	Source Result	%REC	%REC Limits	RPD	RPD Limit
Permethrins (total)	1.13	ppm				46-150		
Phosmet	1.00	ppm	1.00		99.5	48-137		
Piperonyl butoxide	1.01	ppm	1.00		101	43-142		
Prallethrin	0.99	ppm	1.00		98.9	48-144		
Propiconazole	1.00	ppm	1.00		99.5	52-136		
Propoxur	0.94	ppm	1.00		94.5	61-131		
Pyrethrins (total)	0.90	ppm				24-150		
Pyridaben	0.97	ppm	1.00		96.9	40-150		
Spinosad	0.65	ppm	0.820		79.3	42-148		
Spiromesifen	0.86	ppm	1.00		85.9	38-150		
Spirotetramat	0.88	ppm	1.00		88.4	37-132		
Spiroxamine	0.59	ppm	0.550		107	49-136		
Tebuconazole	0.90	ppm	1.00		89.7	46-142		
Thiacloprid	0.82	ppm	1.00		82.4	48-150		
Thiamethoxam	1.16	ppm	1.00		116	46-138		
Trifloxystrobin	0.92	ppm	1.00		91.6	44-144		

Matrix Spike(B190159-MS1)		Extracted - 01/31/19 9:27 Analyzed - 02/01/19 3:30						
Analyte	Result	Units	Spike Level	Source Result	%REC	%REC Limits	RPD	RPD Limit
Abamectin	3.33	ppm	1.93	< LOQ	173	15-150		
Acephate	1.96	ppm	1.97	< LOQ	99.4	45-130		
Acequinocyl	1.27	ppm	1.97	< LOQ	64.4	31-146		
Acetamiprid	2.03	ppm	1.97	< LOQ	103	39-150		
Aldicarb	2.11	ppm	1.97	< LOQ	107	47-143		
Azoxystrobin	1.81	ppm	1.97	< LOQ	92.0	21-150		
Bifenazate	1.95	ppm	1.97	< LOQ	99.3	31-150		
Bifenthrin	1.87	ppm	1.97	< LOQ	95.0	23-132		
Boscalid	1.86	ppm	1.97	< LOQ	94.8	41-141		
Carbaryl	1.88	ppm	1.97	< LOQ	95.4	60-125		
Carbofuran	2.02	ppm	1.97	< LOQ	103	57-136		
Chlorantraniliprole	2.02	ppm	1.97	< LOQ	103	32-145		
Chlorfenapyr	2.69	ppm	1.97	< LOQ	137	29-150		
Chlorpyrifos	2.00	ppm	1.97	< LOQ	102	29-146		
Clofentezine	1.77	ppm	1.97	< LOQ	89.9	48-128		
Cyfluthrin	2.29	ppm	1.97	< LOQ	116	16-150		



Brian Weigel  
 Lab Director

These results relate only to the sample included on this report. The report may not be reproduced except in full, without the written permission of SC Laboratories. Samples tested in accordance with Oregon Administrative Rules, TNI 2009 Standard and SC Laboratories quality assurance plan unless otherwise noted.

## Quality Control

### Pesticide Analysis (Continued)

**Batch: B190159 - Pesticide Prep (Continued)**

Matrix Spike(B190159-MS1)			Extracted - 01/31/19 9:27 Analyzed - 02/01/19 3:30					
Analyte	Result	Units	Spike Level	Source Result	%REC	%REC Limits	RPD	RPD Limit
Cypermethrin	2.17	ppm	1.97	< LOQ	110	22-150		
Daminozide	1.82	ppm	1.97	< LOQ	92.7	34-150		
DDVP (Dichlorvos)	1.91	ppm	1.97	< LOQ	97.3	55-133		
Diazinon	1.74	ppm	1.97	< LOQ	88.4	54-126		
Dimethoate	1.89	ppm	1.97	< LOQ	96.1	60-129		
Ethoprophos	1.73	ppm	1.97	< LOQ	88.0	40-150		
Etofenprox	1.82	ppm	1.97	< LOQ	92.3	25-135		
Etoxazole	1.72	ppm	1.97	< LOQ	87.2	26-149		
Fenoxycarb	1.89	ppm	1.97	< LOQ	96.3	37-145		
Fenpyroximate	2.33	ppm	1.97	< LOQ	119	27-150		
Fipronil	1.75	ppm	1.97	< LOQ	88.9	27-150		
Flonicamid	2.19	ppm	1.97	< LOQ	111	46-139		
Fludioxonil	3.41	ppm	1.97	< LOQ	174	31-150		
Hexythiazox	2.16	ppm	1.97	< LOQ	110	32-150		
Imazalil	1.72	ppm	1.97	< LOQ	87.4	44-142		
Imidacloprid	1.85	ppm	1.97	< LOQ	94.0	23-150		
Kresoxim-methyl	1.82	ppm	1.97	< LOQ	92.5	49-130		
Malathion	1.98	ppm	1.97	< LOQ	101	25-150		
Metalaxyl	1.78	ppm	1.97	< LOQ	90.5	49-141		
Methiocarb	1.78	ppm	1.97	< LOQ	90.6	44-146		
Methomyl	2.26	ppm	1.97	< LOQ	115	44-136		
Methyl parathion	1.93	ppm	1.97	< LOQ	98.3	15-150		
MGK-264	1.03	ppm	1.24	< LOQ	83.2	22-150		
Myclobutanil	1.77	ppm	1.97	< LOQ	89.9	34-150		
Naled	1.93	ppm	1.97	< LOQ	98.2	38-142		
Oxamyl	2.25	ppm	1.97	< LOQ	114	40-132		
Paclobutrazol	1.79	ppm	1.97	< LOQ	90.8	29-147		
Permethrins (total)	1.54	ppm		< LOQ		27-104		
Phosmet	1.94	ppm	1.97	< LOQ	98.8	35-150		
Piperonyl butoxide	1.87	ppm	1.97	< LOQ	95.2	34-143		
Prallethrin	2.00	ppm	1.97	< LOQ	102	33-150		
Propiconazole	1.93	ppm	1.97	< LOQ	98.0	46-138		
Propoxur	1.96	ppm	1.97	< LOQ	99.4	50-138		
Pyrethrins (total)	1.38	ppm		< LOQ		21-150		
Pyridaben	1.53	ppm	1.97	< LOQ	77.9	39-150		



Brian Weigel  
Lab Director

These results relate only to the sample included on this report. The report may not be reproduced except in full, without the written permission of SC Laboratories. Samples tested in accordance with Oregon Administrative Rules, TNI 2009 Standard and SC Laboratories quality assurance plan unless otherwise noted.

## Quality Control

### Pesticide Analysis (Continued)

**Batch: B190159 - Pesticide Prep (Continued)**

Matrix Spike(B190159-MS1)			Extracted - 01/31/19 9:27 Analyzed - 02/01/19 3:30					
Analyte	Result	Units	Spike Level	Source Result	%REC	%REC Limits	RPD	RPD Limit
Spinosad	1.21	ppm	1.61	< LOQ	75.1	31-150		
Spiromesifen	1.60	ppm	1.97	< LOQ	81.4	27-141		
Spirotetramat	2.21	ppm	1.97	< LOQ	112	31-141		
Spiroxamine	1.27	ppm	1.08	< LOQ	117	57-139		
Tebuconazole	1.39	ppm	1.97	< LOQ	70.9	32-140		
Thiacloprid	1.75	ppm	1.97	< LOQ	88.9	45-150		
Thiamethoxam	2.20	ppm	1.97	< LOQ	112	40-141		
Trifloxystrobin	1.71	ppm	1.97	< LOQ	87.1	30-137		

Matrix Spike Dup(B190159-MSD1)			Extracted - 01/31/19 9:27 Analyzed - 02/01/19					
Analyte	Result	Units	Spike Level	Source Result	%REC	%REC Limits	RPD	RPD Limit
Abamectin	3.36	ppm	1.95	< LOQ	172	15-150	0.215	40
Acephate	2.01	ppm	1.99	< LOQ	101	45-130	1.41	26
Acequinocyl	1.26	ppm	1.99	< LOQ	63.2	31-146	1.86	50
Acetamiprid	2.08	ppm	1.99	< LOQ	105	39-150	1.54	21
Aldicarb	2.23	ppm	1.99	< LOQ	112	47-143	4.57	30
Azoxystrobin	1.84	ppm	1.99	< LOQ	92.6	21-150	0.592	21
Bifenazate	1.98	ppm	1.99	< LOQ	99.6	31-150	0.330	20
Bifenthrin	1.90	ppm	1.99	< LOQ	95.5	23-132	0.437	30
Boscalid	1.94	ppm	1.99	< LOQ	97.7	41-141	3.05	20
Carbaryl	1.93	ppm	1.99	< LOQ	97.0	60-125	1.65	20
Carbofuran	2.07	ppm	1.99	< LOQ	104	57-136	1.34	24
Chlorantraniliprole	2.15	ppm	1.99	< LOQ	108	32-145	5.08	20
Chlorfenapyr	2.86	ppm	1.99	< LOQ	144	29-150	4.85	50
Chlorpyrifos	2.06	ppm	1.99	< LOQ	103	29-146	1.57	24
Clofentezine	1.80	ppm	1.99	< LOQ	90.5	48-128	0.699	20
Cyfluthrin	2.45	ppm	1.99	< LOQ	123	16-150	5.65	50
Cypermethrin	2.18	ppm	1.99	< LOQ	110	22-150	0.624	30
Daminozide	1.86	ppm	1.99	< LOQ	93.7	34-150	1.07	30
DDVP (Dichlorvos)	1.98	ppm	1.99	< LOQ	99.5	55-133	2.23	30
Diazinon	1.73	ppm	1.99	< LOQ	87.0	54-126	1.59	20
Dimethoate	1.94	ppm	1.99	< LOQ	97.7	60-129	1.67	20
Ethoprophos	1.77	ppm	1.99	< LOQ	88.7	40-150	0.892	29
Etofenprox	1.84	ppm	1.99	< LOQ	92.4	25-135	0.0526	24
Etoxazole	1.74	ppm	1.99	< LOQ	87.5	26-149	0.288	30



Brian Weigel  
Lab Director

These results relate only to the sample included on this report. The report may not be reproduced except in full, without the written permission of SC Laboratories. Samples tested in accordance with Oregon Administrative Rules, TNI 2009 Standard and SC Laboratories quality assurance plan unless otherwise noted.

## Quality Control Pesticide Analysis (Continued)

Batch: B190159 - Pesticide Prep (Continued)

Matrix Spike Dup(B190159-MSD1)			Extracted - 01/31/19 9:27 Analyzed - 02/01/19					
Analyte	Result	Units	Spike Level	Source Result	%REC	%REC Limits	RPD	RPD Limit
Fenoxycarb	1.93	ppm	1.99	< LOQ	97.0	37-145	0.690	23
Fenpyroximate	2.40	ppm	1.99	< LOQ	121	27-150	1.78	20
Fipronil	1.75	ppm	1.99	< LOQ	87.8	27-150	1.30	28
Flonicamid	2.25	ppm	1.99	< LOQ	113	46-139	1.53	29
Fludioxonil	2.62	ppm	1.99	< LOQ	132	31-150	27.3	30
Hexythiazox	2.21	ppm	1.99	< LOQ	111	32-150	0.998	28
Imazalil	1.83	ppm	1.99	< LOQ	92.0	44-142	5.13	25
Imidacloprid	2.06	ppm	1.99	< LOQ	104	23-150	9.76	30
Kresoxim-methyl	1.78	ppm	1.99	< LOQ	89.3	49-130	3.52	20
Malathion	1.99	ppm	1.99	< LOQ	100	25-150	0.520	21
Metalaxyl	1.83	ppm	1.99	< LOQ	92.1	49-141	1.77	20
Methiocarb	1.85	ppm	1.99	< LOQ	92.8	44-146	2.37	20
Methomyl	2.35	ppm	1.99	< LOQ	118	44-136	2.73	30
Methyl parathion	2.07	ppm	1.99	< LOQ	104	15-150	5.80	50
MGK-264	1.05	ppm	1.25	< LOQ	83.9	22-150	0.874	24
Myclobutanil	1.79	ppm	1.99	< LOQ	89.8	34-150	0.0261	23
Naled	1.95	ppm	1.99	< LOQ	98.2	38-142	0.00451	25
Oxamyl	2.28	ppm	1.99	< LOQ	115	40-132	0.259	30
Paclobutrazol	1.83	ppm	1.99	< LOQ	92.0	29-147	1.31	20
Permethrins (total)	1.55	ppm		< LOQ		27-104		30
Phosmet	1.97	ppm	1.99	< LOQ	99.2	35-150	0.395	20
Piperonyl butoxide	1.94	ppm	1.99	< LOQ	97.3	34-143	2.17	21
Prallethrin	2.04	ppm	1.99	< LOQ	102	33-150	0.915	25
Propiconazole	1.97	ppm	1.99	< LOQ	98.8	46-138	0.863	20
Propoxur	2.03	ppm	1.99	< LOQ	102	50-138	2.78	28
Pyrethrins (total)	1.42	ppm		< LOQ		21-150		28
Pyridaben	1.55	ppm	1.99	< LOQ	78.0	39-150	0.130	23
Spinosad	1.22	ppm	1.63	< LOQ	75.0	31-150	0.113	30
Spiromesifen	1.61	ppm	1.99	< LOQ	80.8	27-141	0.657	30
Spirotetramat	2.30	ppm	1.99	< LOQ	116	31-141	2.87	25
Spiroxamine	1.28	ppm	1.09	< LOQ	117	57-139	0.0327	20
Tebuconazole	1.41	ppm	1.99	< LOQ	70.8	32-140	0.0831	20
Thiacloprid	1.85	ppm	1.99	< LOQ	93.0	45-150	4.45	21
Thiamethoxam	2.31	ppm	1.99	< LOQ	116	40-141	3.69	30
Trifloxystrobin	1.71	ppm	1.99	< LOQ	86.1	30-137	1.21	29



Brian Weigel  
 Lab Director

These results relate only to the sample included on this report. The report may not be reproduced except in full, without the written permission of SC Laboratories. Samples tested in accordance with Oregon Administrative Rules, TNI 2009 Standard and SC Laboratories quality assurance plan unless otherwise noted.

## Quality Control Terpene Analysis

**Batch: B190158 - Potency/Terpenes**

Blank(B190158-BLK1)			Extracted - 01/31/19 9:20 Analyzed - 01/31/19 20:28					
Analyte	Result	Units	Spike Level	Source Result	%REC	%REC Limits	RPD	RPD Limit
alpha Pinene	< LOQ	%						
Myrcene	< LOQ	%						
alpha Phellandrene	< LOQ	%						
3-Carene	< LOQ	%						
alpha Terpinene	< LOQ	%						
Limonene	< LOQ	%						
Terpinolene	< LOQ	%						
Linalool	< LOQ	%						
Fenchol	< LOQ	%						
Borneol	< LOQ	%						
Terpineol	< LOQ	%						
Geraniol	< LOQ	%						
alpha Humulene	< LOQ	%						
beta Caryophyllene	< LOQ	%						
Caryophyllene Oxide	< LOQ	%						
alpha Bisabolol	< LOQ	%						
Camphene	< LOQ	%						
beta Pinene	< LOQ	%						
Ocimene	< LOQ	%						
Sabinene	< LOQ	%						
Camphor	< LOQ	%						
Isoborneol	< LOQ	%						
Menthol	< LOQ	%						
alpha Cedrene	< LOQ	%						
Nerolidol	< LOQ	%						
R-(+)-Pulegone	< LOQ	%						
Eucalyptol	< LOQ	%						
p-Cymene	< LOQ	%						
(-)-Isopulegol	< LOQ	%						
Geranyl Acetate	< LOQ	%						
Guaiol	< LOQ	%						
Valencene	< LOQ	%						
Phytol	0.635	%						
Citronellol	< LOQ	%						
gamma-Terpinene	< LOQ	%						



Brian Weigel  
Lab Director

These results relate only to the sample included on this report. The report may not be reproduced except in full, without the written permission of SC Laboratories. Samples tested in accordance with Oregon Administrative Rules, TNI 2009 Standard and SC Laboratories quality assurance plan unless otherwise noted.

## Quality Control

### Terpene Analysis (Continued)

**Batch: B190158 - Potency/Terpenes (Continued)**

Duplicate(B190158-DUP1)			Extracted - 01/31/19 9:20 Analyzed - 01/31/19 20:28					
Analyte	Result	Units	Spike Level	Source Result	%REC	%REC Limits	RPD	RPD Limit
alpha Ocimene	< LOQ	%		< LOQ				20
alpha Terpineol	0.044	%		0.047			8.28	20
beta Ocimene	0.213	%		0.228			6.57	20
beta Terpineol	< LOQ	%		< LOQ				20
cis-Nerolidol	< LOQ	%		< LOQ				20
Phytol 1	0.025	%		0.036			34.8	20
Phytol 2	< LOQ	%		0.020				20
trans-Nerolidol	< LOQ	%		< LOQ				20
alpha Pinene	0.069	%		0.074			5.84	20
Myrcene	0.299	%		0.319			6.61	20
alpha Phellandrene	0.068	%		0.071			5.50	20
3-Carene	0.048	%		0.050			4.23	20
alpha Terpinene	0.038	%		0.039			2.19	20
Limonene	0.203	%		0.217			6.57	20
Terpinolene	1.321	%		1.423			7.41	20
Linalool	< LOQ	%		< LOQ				20
Fenchol	< LOQ	%		< LOQ				20
Borneol	< LOQ	%		< LOQ				20
Terpineol	0.044	%		0.047			8.28	20
Geraniol	0.028	%		0.029			4.32	20
alpha Humulene	0.085	%		0.090			5.93	20
beta Caryophyllene	0.194	%		0.207			6.53	20
Caryophyllene Oxide	0.021	%		0.023			9.82	20
alpha Bisabolol	< LOQ	%		< LOQ				20
Camphene	< LOQ	%		< LOQ				20
beta Pinene	0.125	%		0.132			5.88	20
Ocimene	0.213	%		0.228			6.57	20
Sabinene	< LOQ	%		< LOQ				20
Camphor	< LOQ	%		< LOQ				20
Isoborneol	< LOQ	%		< LOQ				20
Menthol	< LOQ	%		< LOQ				20
alpha Cedrene	< LOQ	%		< LOQ				20
Nerolidol	< LOQ	%		< LOQ				20
R-(+)-Pulegone	< LOQ	%		< LOQ				20
Eucalyptol	< LOQ	%		< LOQ				20



Brian Weigel  
Lab Director

These results relate only to the sample included on this report. The report may not be reproduced except in full, without the written permission of SC Laboratories. Samples tested in accordance with Oregon Administrative Rules, TNI 2009 Standard and SC Laboratories quality assurance plan unless otherwise noted.

## Quality Control

### Terpene Analysis (Continued)

**Batch: B190158 - Potency/Terpenes (Continued)**

Duplicate(B190158-DUP1)			Extracted - 01/31/19 9:20 Analyzed - 01/31/19 20:28					
Analyte	Result	Units	Spike Level	Source Result	%REC	%REC Limits	RPD	RPD Limit
p-Cymene	< LOQ	%		< LOQ				20
(-)-Isopulegol	< LOQ	%		< LOQ				20
Geranyl Acetate	< LOQ	%		< LOQ				20
Guaiol	0.085	%		0.088			3.72	20
Valencene	0.052	%		0.056			7.89	20
Phytol	0.025	%		0.057			76.0	20
Citronellol	< LOQ	%		< LOQ				20
gamma-Terpinene	0.025	%		0.024			2.81	20

**Batch: B190160 - Gravimetric**

Duplicate(B190160-DUP1)			Extracted - 02/01/19 9:03 Analyzed - 02/01/19 9:03					
Analyte	Result	Units	Spike Level	Source Result	%REC	%REC Limits	RPD	RPD Limit
Percent Moisture	13.0	%		13.0			0.0691	20

**Batch: B190161 - Water Activity**

Duplicate(B190161-DUP1)			Extracted - 02/01/19 9:06 Analyzed - 02/01/19 9:06					
Analyte	Result	Units	Spike Level	Source Result	%REC	%REC Limits	RPD	RPD Limit
Water Activity	0.506	AW		0.503			0.693	20



Brian Weigel  
Lab Director

These results relate only to the sample included on this report. The report may not be reproduced except in full, without the written permission of SC Laboratories. Samples tested in accordance with Oregon Administrative Rules, TNI 2009 Standard and SC Laboratories quality assurance plan unless otherwise noted.





**OREGON LIQUOR CONTROL COMMISSION  
CANNABIS TRANSPORTATION MANIFEST**



19A0116

All sales transactions are to be completed prior to transportation of any CANNABIS. The receiving entity may reject product delivered, but amount delivered must be limited to amount agreed upon in prior sales transaction.

<b>Manifest No.:</b>	<b>0001272615</b>	<b>Date Created:</b>	<b>1/28/2019 5:01 PM</b>
<b>Originating Entity:</b>	Ananda Farms	<b>For OLCC Use Only</b>	
<b>Originating License Number:</b>	020-100019879F7		
<b>Address of Originating Entity:</b>	555 Davidson Rd Williams, OR 97544		
<b>Phone No. of Originating Entity:</b>	541-761-8190		
<b>Contact Phone No. for Inquiries: 5417618190</b>			
<b>Destination # 1</b>	<b>SC Laboratories</b>	<b>Destination Phone No.:</b>	<b>707-339-0050</b>
<b>Destination License Number:</b>	010-1004748743D	<b>Date and Approx. Time of Departure:</b>	1/28/2019 4:48 PM
<b>Address of Destination:</b>	15865 SW 74th Avenue Ste 110 Tigard, OR 97224	<b>Date and Approx. Time of Arrival:</b>	1/29/2019 5:00 PM
		<b>Date/Time Received:</b>	1/29/19 1929
<b>Route to be Traveled:</b>		<b>Notes:</b> details for extenuating circumstances (e.g., road closure, flat tire, etc.)	
<p>Take Cedar Flat Rd to Williams Hwy 8 min (4.0 mi)</p> <p>Continue on Williams Hwy. Take OR-238 E to S Peach St in Medford 40 min (29.0 mi)</p> <p>Continue on S Peach St. Drive to Dakota Ave 2 min (0.4 mi) 744 Dakota Ave Medford, OR 97501 Get on I-5 N from W Stewart Ave, Rogue Valley Hwy 99 and Garfield St 7 min (2.5 mi)</p> <p>Follow I-5 N to Lower Boones Ferry Rd in Tualatin. Take exit 290 from I-5 N 4 h 1 min (263 mi)</p> <p>Take SW Durham Rd to SW 74th Ave in Tigard 4 min (1.0 mi) 15865 SW 74th Ave Tigard, OR 97224</p>			
<b>Name of Person Transporting:</b>	Joel Glimpse/Scott Forster	<b>Handler Permit No. of Driver:</b>	102682/A22
<b>State Driver's License No.:</b>	9474950/625521	<b>Signature of Person Transporting:</b>	
<b>Make, Model, License Plate No.:</b>	Scion/Nissan XB/nv200 175JLS/825 KAT		
<b>Package # 1</b>	<b>Production Batch No.</b>	<b>Item Name</b>	<b>Quantity</b>
1A4010300000836000002089 Lab Test: SubmittedForTesting Status: Shipped		Durban Poison Buds (Buds (by strain))	Shp: 35.0000 g
<b>Harvests:</b>	Durban Poison 10/26/2018, Durban Poison 10/27/2018		
<b>Package # 2</b>	<b>Production Batch No.</b>	<b>Item Name</b>	<b>Quantity</b>
1A4010300000836000002090 Lab Test: SubmittedForTesting Status: Shipped		GSC Buds (Buds (by strain))	Shp: 35.0000 g
<b>Harvests:</b>	GSC 10/29/18		
<b>Package # 3</b>	<b>Production Batch No.</b>	<b>Item Name</b>	<b>Quantity</b>
1A4010300000836000002091 Lab Test: SubmittedForTesting Status: Shipped		Mendo Breath Buds (Buds (by strain))	Shp: 35.0000 g
<b>Harvests:</b>	Mendo Breath 11/02/18		



**OREGON LIQUOR CONTROL COMMISSION  
CANNABIS TRANSPORTATION MANIFEST**



All sales transactions are to be completed prior to transportation of any CANNABIS. The receiving entity may reject product delivered, but amount delivered must be limited to amount agreed upon in prior sales transaction.

<b>Manifest No.:</b>	<b>0001272615</b>	<b>Date Created:</b>	<b>1/28/2019 5:01 PM</b>
<b>PRODUCT REJECTION</b> <i>(if only a portion of shipment is rejected, circle that portion above)</i>			
<b>Name of Person Receiving or Rejecting Product:</b>	Justin Miller		
I confirm that the contents of this shipment match weight records entered above, and I agree to take custody of those portions of this shipment <i>not</i> circled above. Those portions circled were returned to the individual delivering this shipment.			
<b>Signature:</b>	Justin Miller	<b>Date:</b>	1/29/19
<b>Signature of individual taking receipt of rejected portion of this shipment:</b>			





